

Guidelines for Discussion

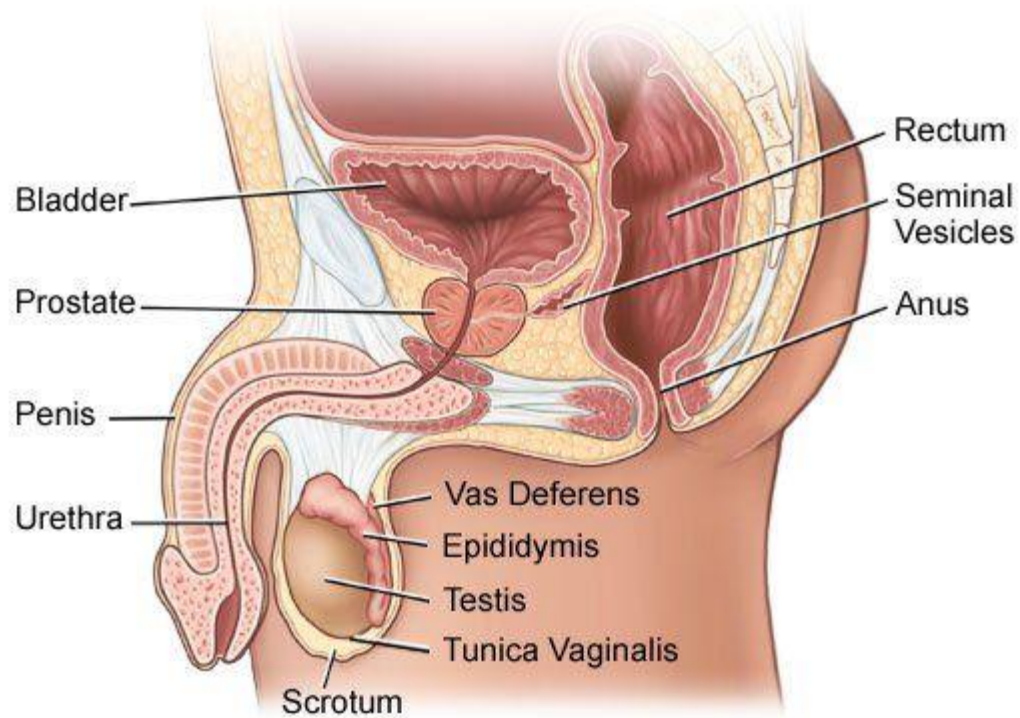
- ✓ Treat the subject seriously.
- ✓ Use humor appropriately.
- ✓ Use the correct terms for body parts and functions.
- ✓ Respect other people and their ideas.
- ✓ Avoid gossiping.
- ✓ Avoid personal questions and stories.
- ✓ Ask questions; questions are good.




Video:

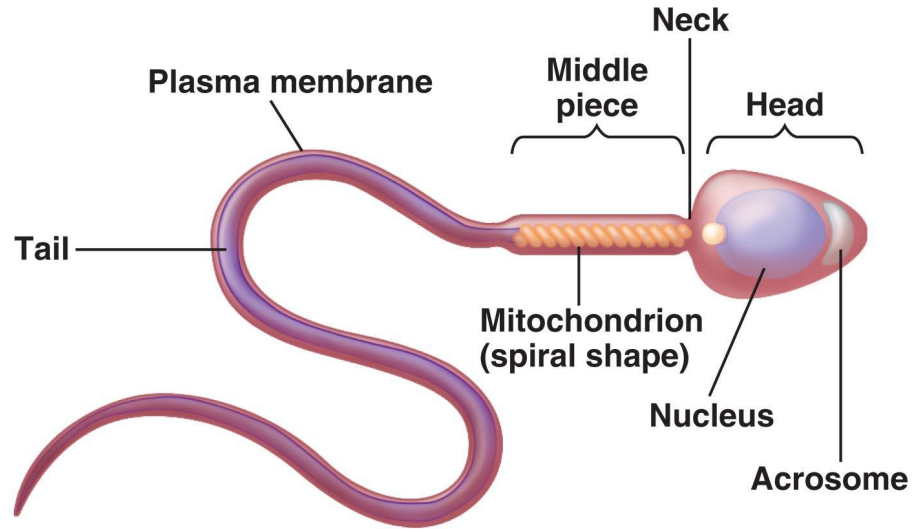


Male Reproductive Tract



Sperm

- Male sex cell
- Males begin to produce sperm during puberty
- Produce millions per day





Semen

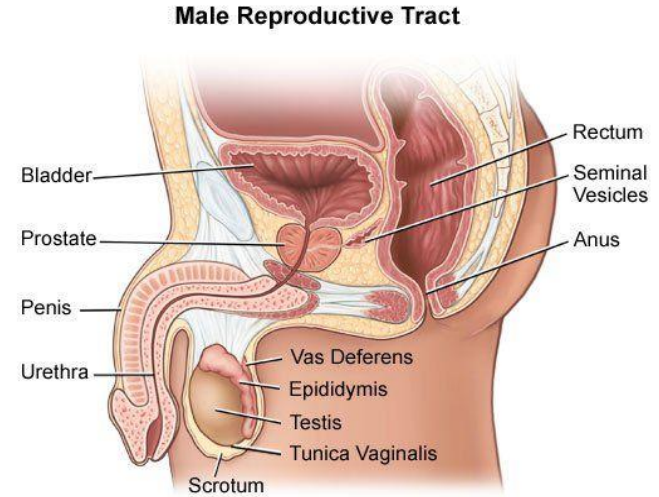
- Contains sperm and is ejaculated through the end of the penis



Ejaculation

- Through contractions and extra blood flow, it's the forceful sending of semen
- Nocturnal Emission
 - “Wet Dream”

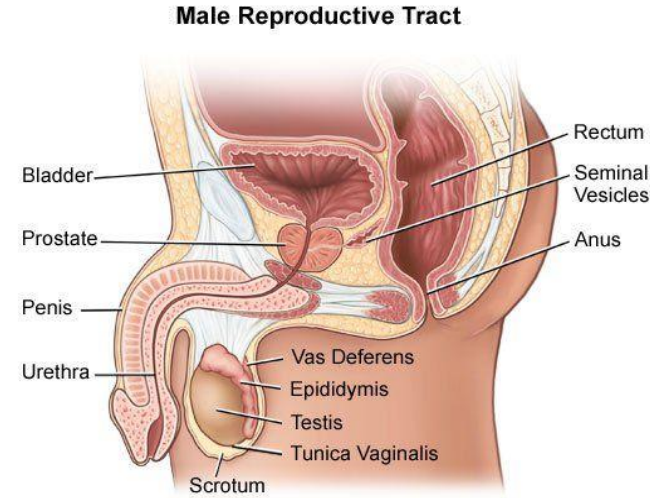
Scrotum



- Loose, pouch-like, sac of skin that hangs behind and below the penis contain the testicles
- Has special muscles that allow it to contract or relax, moving the testicles closer to the body for warmth or farther away from the body to cool the temperature

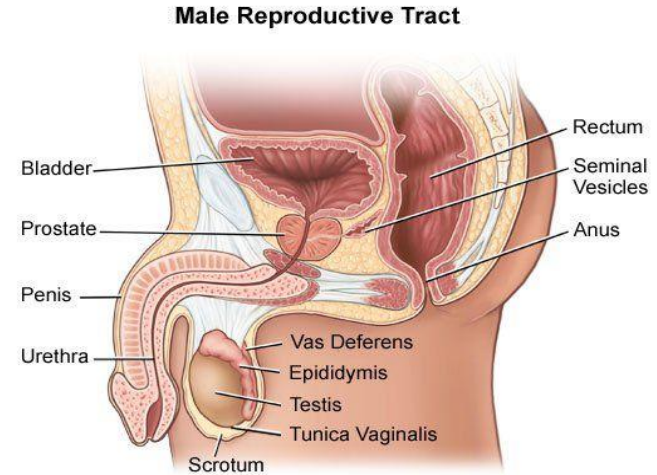
Testis (Testicles)

- Oval organs about the size of large olives that lie in the scrotum, secured by a structure called the spermatic cord
- Responsible for making testosterone, the primary male sex hormone and for generating sperm
- Most men have two testes



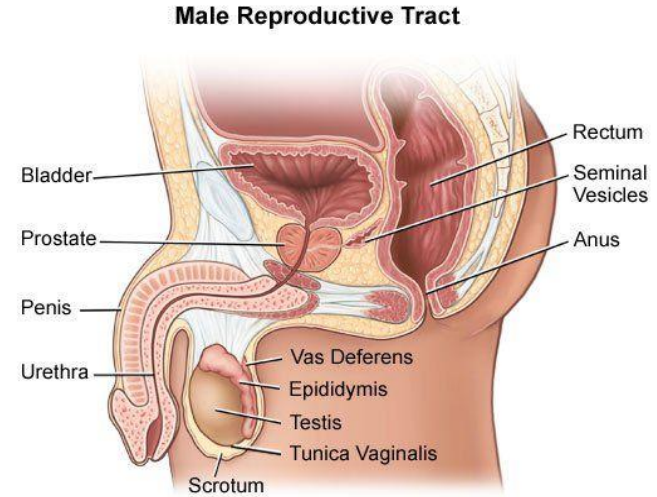
Epididymis

- Long, coiled tube that rests on the backside of each testicle
- Transports and stores sperm cells that are produced in the testes
- Brings the sperm to maturity



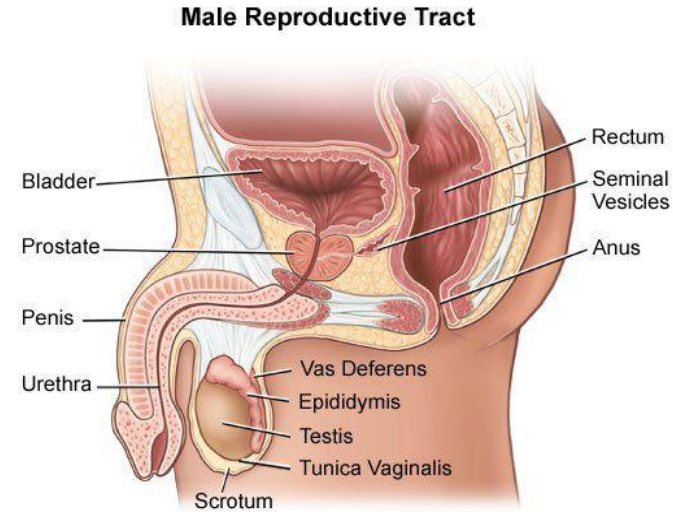
Vas Deferens

- Long, muscular tube that travels from the epididymis into the pelvic cavity, to just behind the bladder
- Transports mature sperm to the urethra, the tube that carries urine or sperm to outside of the body, in preparation for ejaculation



Urethra

- Tube that carries urine from the bladder to outside of the body.
- In males, it has the additional function of ejaculating semen when the man reaches orgasm
- When the penis is erect, the flow of urine is blocked from the urethra, allowing only semen to be ejaculated



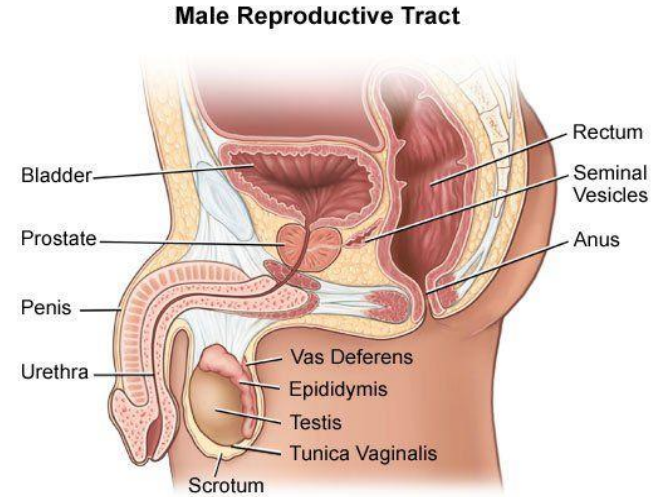


Prostate Gland

- Walnut-sized structure. Located behind the bladder, in front of the rectum
- Contributes additional fluid to ejaculate

Seminal Vesicle

- Sac-like pouches that attach to the vas deferens near the base of the bladder.
- Help produce semen





Cowper's Gland (Bulbourethral Gland)

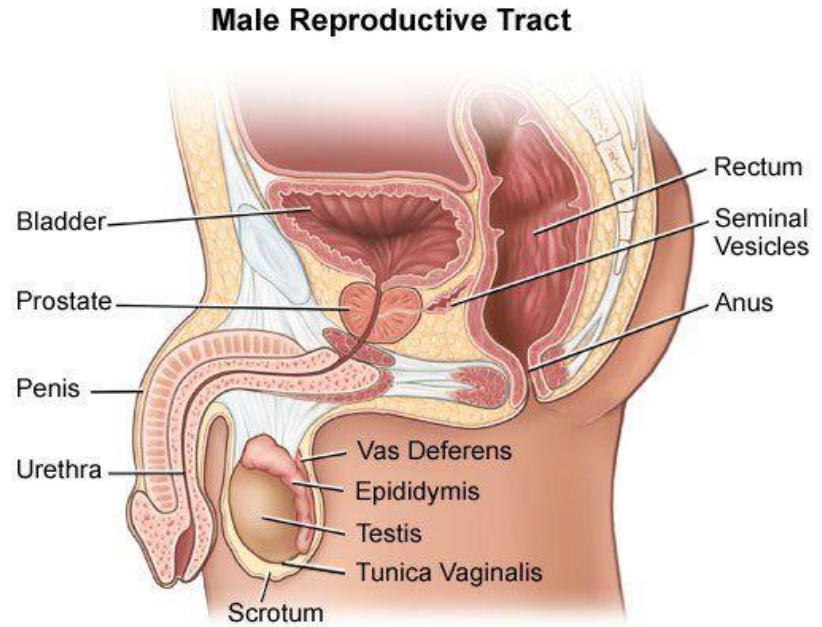
- Produce a clear, slippery fluid that empties directly into the urethra

Penis

- Male organ

Erection

- As the penis fills with blood, it becomes rigid and hard





Foreskin

- Loose layer of skin which covers the head of the penis

Circumcision

- Surgical procedure that removes the foreskin.
- Usually performed at birth

Shark Tank - Review Rules

My Personal Puberty Plan - 4th/5th/6th Grade

