

## Guidelines for Discussion

- ✓ Treat the subject seriously.
- ✓ Use humor appropriately.
- ✓ Use the correct terms for body parts and functions.
- ✓ Respect other people and their ideas.
- ✓ Avoid gossiping.
- ✓ Avoid personal questions and stories.
- ✓ Ask questions; questions are good.

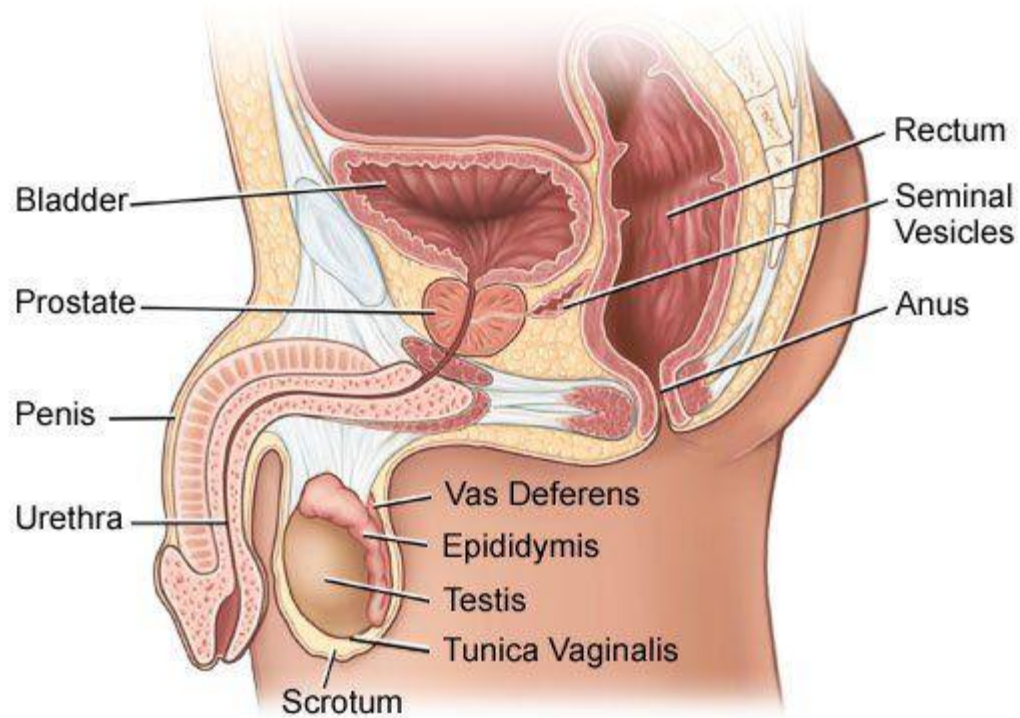




# Video

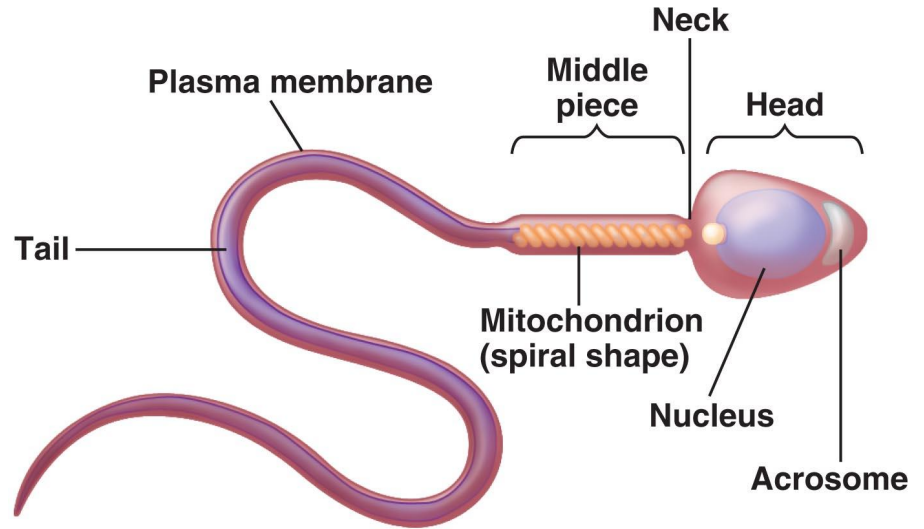


## Male Reproductive Tract



# Sperm

- Male sex cell
- Males begin to produce sperm during puberty
- Produce millions per day





# Semen

- Contains sperm and is ejaculated through the end of the penis when the man reaches sexual climax

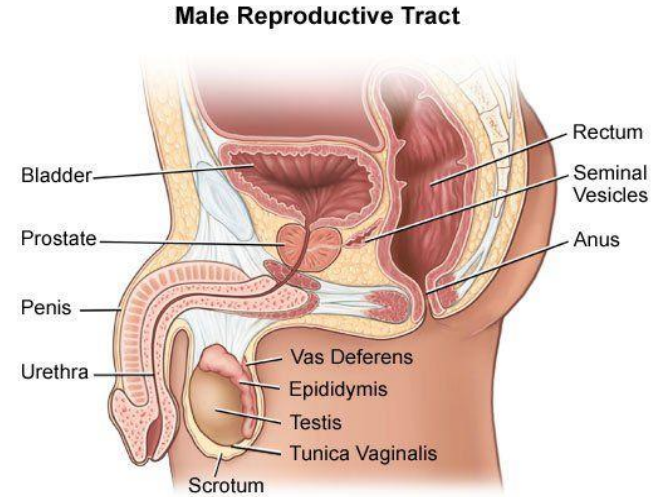


# Ejaculation

- Through contractions and extra blood flow, it's the forceful sending of semen
  - Semen contains sperm to get the woman pregnant
- Nocturnal Emission
  - “Wet Dream”

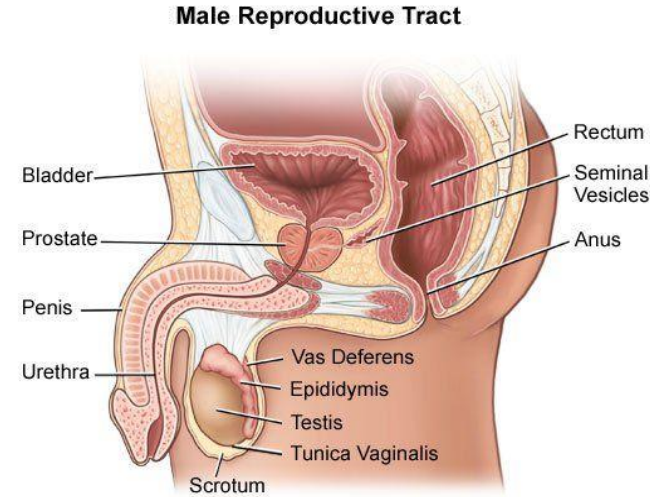
# Scrotum

- Loose, pouch-like, sac of
- skin that hangs behind and below the penis contain the testicles
- Has special muscles that allow it to contract or relax, moving the testicles closer to the body for warmth or farther away from the body to cool the temperature



# Testis (Testicles)

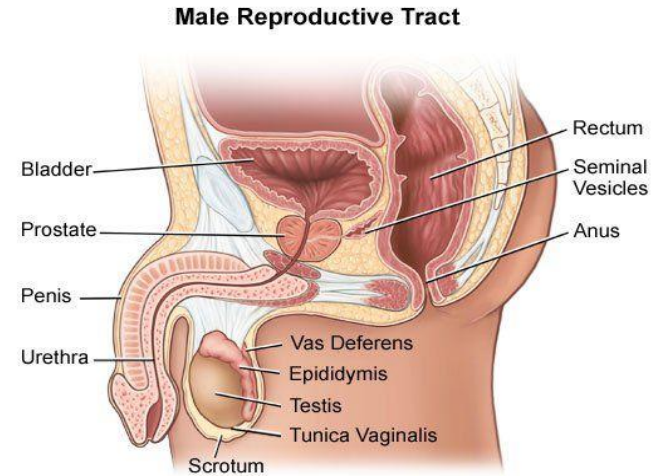
- Oval organs about the size of large olives that lie in the scrotum, secured by a structure called the spermatic cord
- Responsible for making testosterone, the primary male sex hormone and for generating sperm
- Most men have two testes





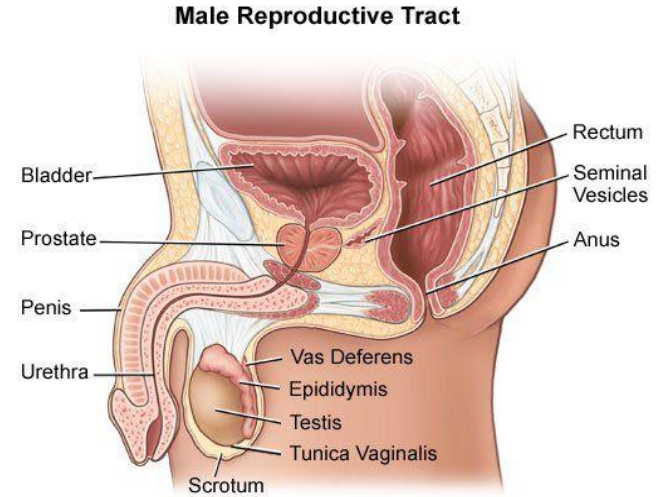
# Epididymis

- Long, coiled tube that rests on the backside of each testicle
- Transports and stores sperm cells that are produced in the testes
- Brings the sperm to maturity
- During sexual arousal, the epididymis is contracted, which forces the sperm into the vas deferens.



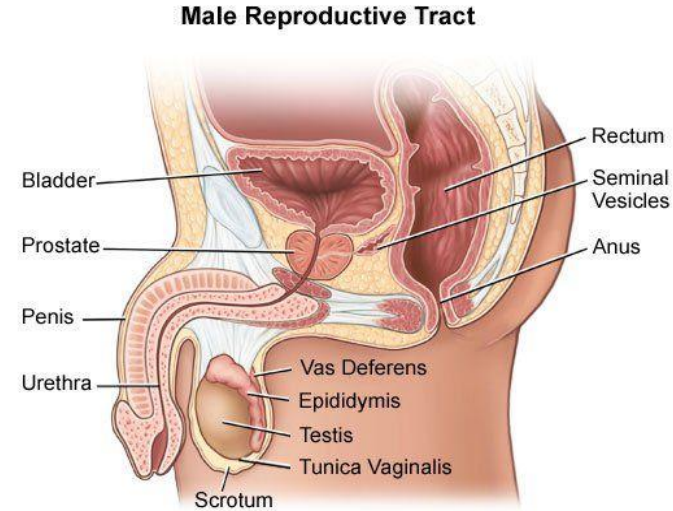
# Vas Deferens

- Long, muscular tube that travels from the epididymis into the pelvic cavity, to just behind the bladder
- Transports mature sperm to the urethra, the tube that carries urine or sperm to outside of the body, in preparation for ejaculation



# Urethra

- Tube that carries urine from the bladder to outside of the body.
- In males, it has the additional function of ejaculating semen when the man reaches orgasm
- When the penis is erect, the flow of urine is blocked from the urethra, allowing only semen to be ejaculated



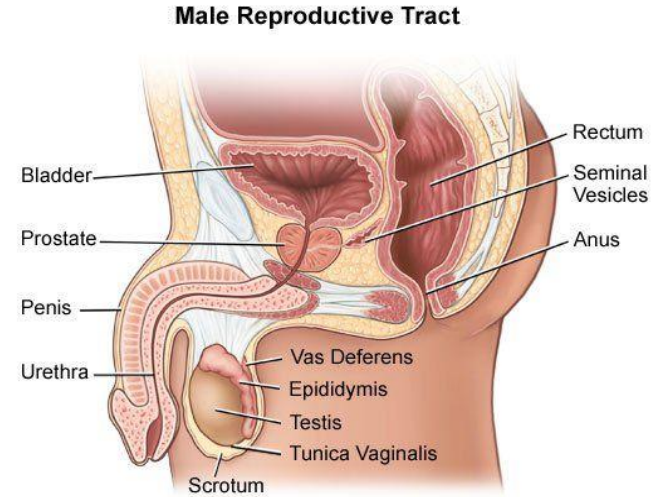


# Prostate Gland

- Walnut-sized structure. Located behind the bladder, in front of the rectum
- Contributes additional fluid to ejaculate

# Seminal Vesicle

- Sac-like pouches that attach to the vas deferens near the base of the bladder.
- Help produce semen





# Cowper's Gland (Bulbourethral Gland)

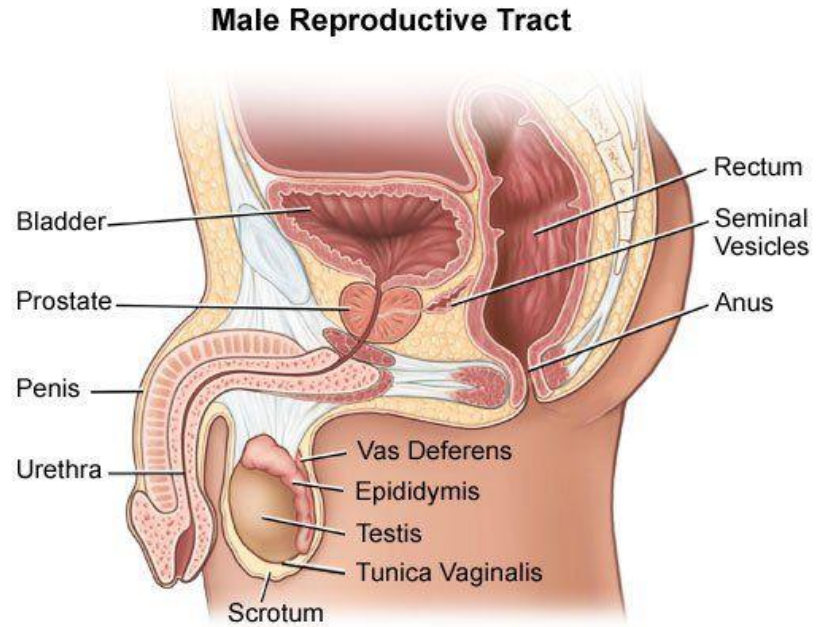
- Produce a clear, slippery fluid that empties directly into the urethra

# Penis

- Male organ used in sexual intercourse

# Erection

- As the penis fills with blood, it becomes rigid and hard
- Allows for penetration during sexual intercourse





# Foreskin

- Loose layer of skin which covers the head of the penis

# Circumcision

- Surgical procedure that removes the foreskin.
- Usually performed at birth



# Video





# HIV

Myth or Fact



HIV stands for Human Immunodeficiency Virus



HIV causes AIDS, which is incurable



Sexual intercourse is the only way to contract HIV



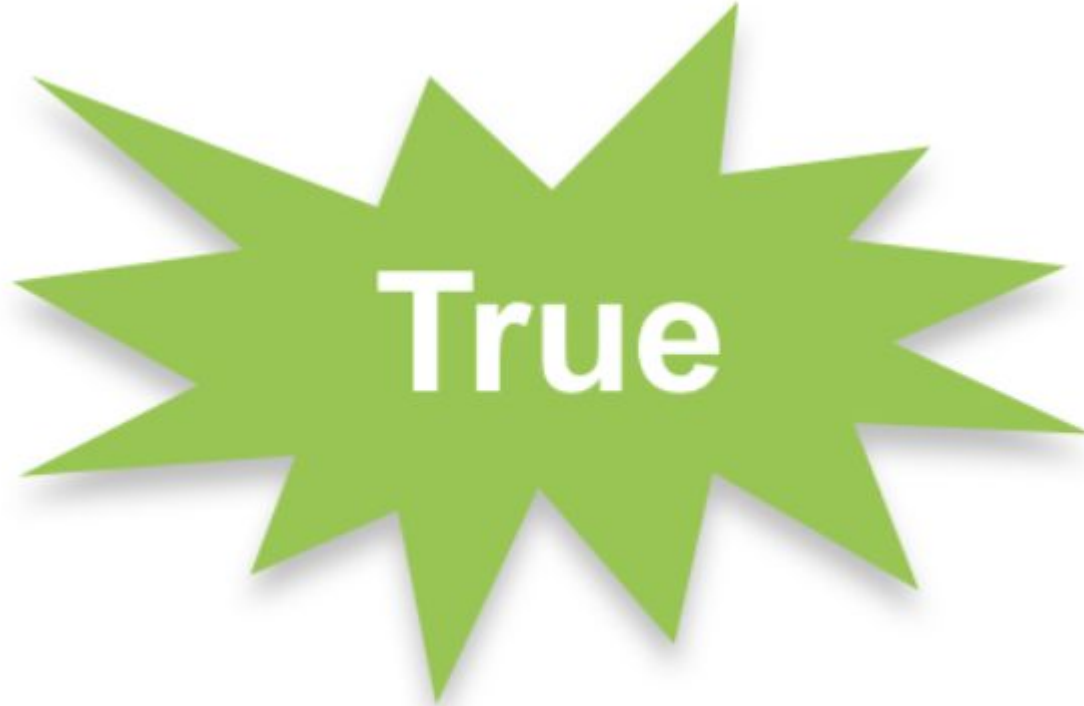
**False**

Blood is the only fluid that can transmit HIV

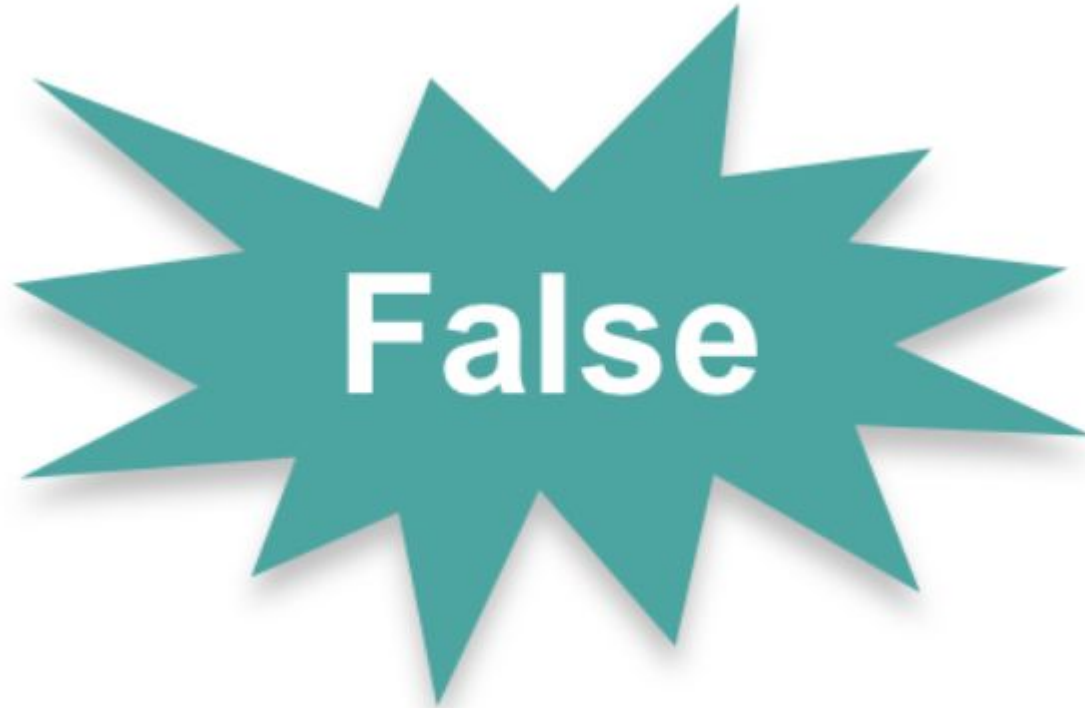


**False**

HIV is not transmitted through casual contact

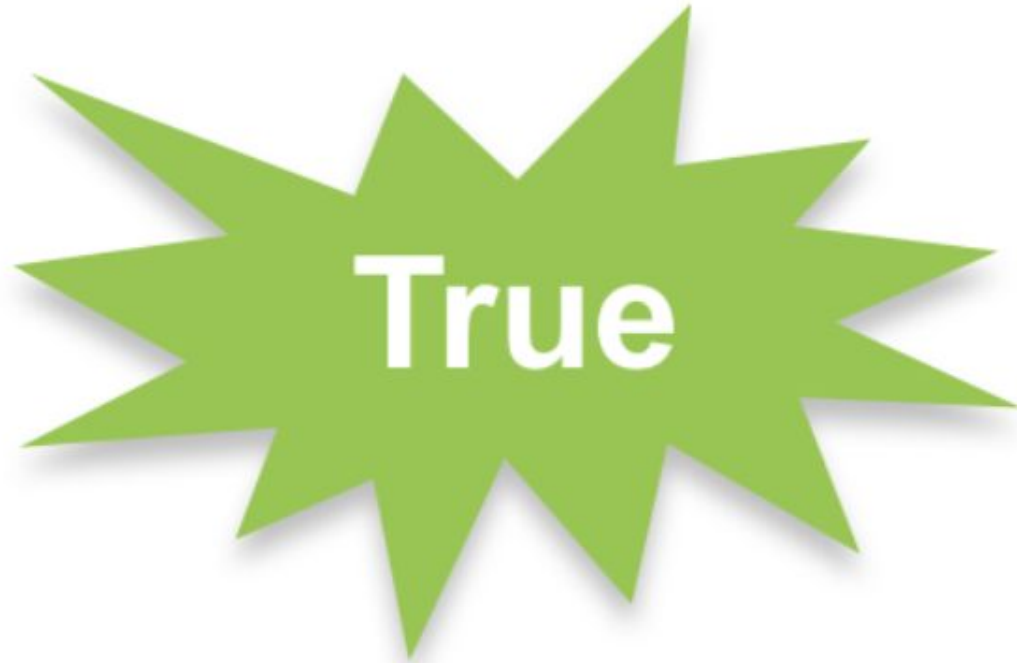


HIV attacks a person's skin cells

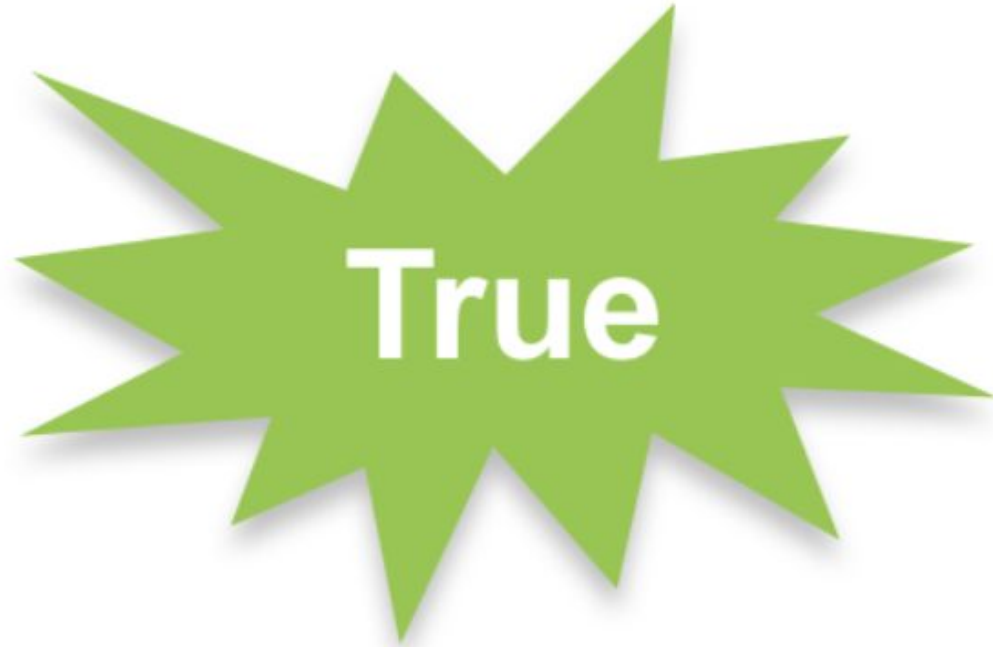




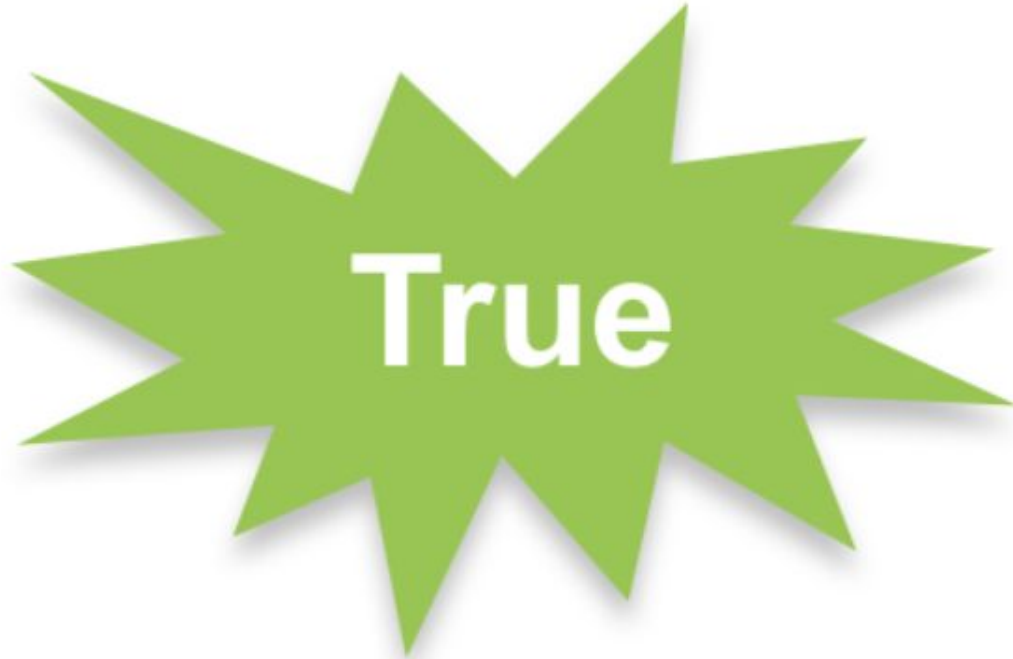
People who have HIV can look and feel healthy most of the time



All people deserve to be treated with dignity and respect, whether or not they have HIV



Abstinence is the only sure way to prevent sexual transmission of HIV





---

# Shark Tank - Review Rules

[My Personal Puberty Plan - 4th/5th/6th Grade](#)